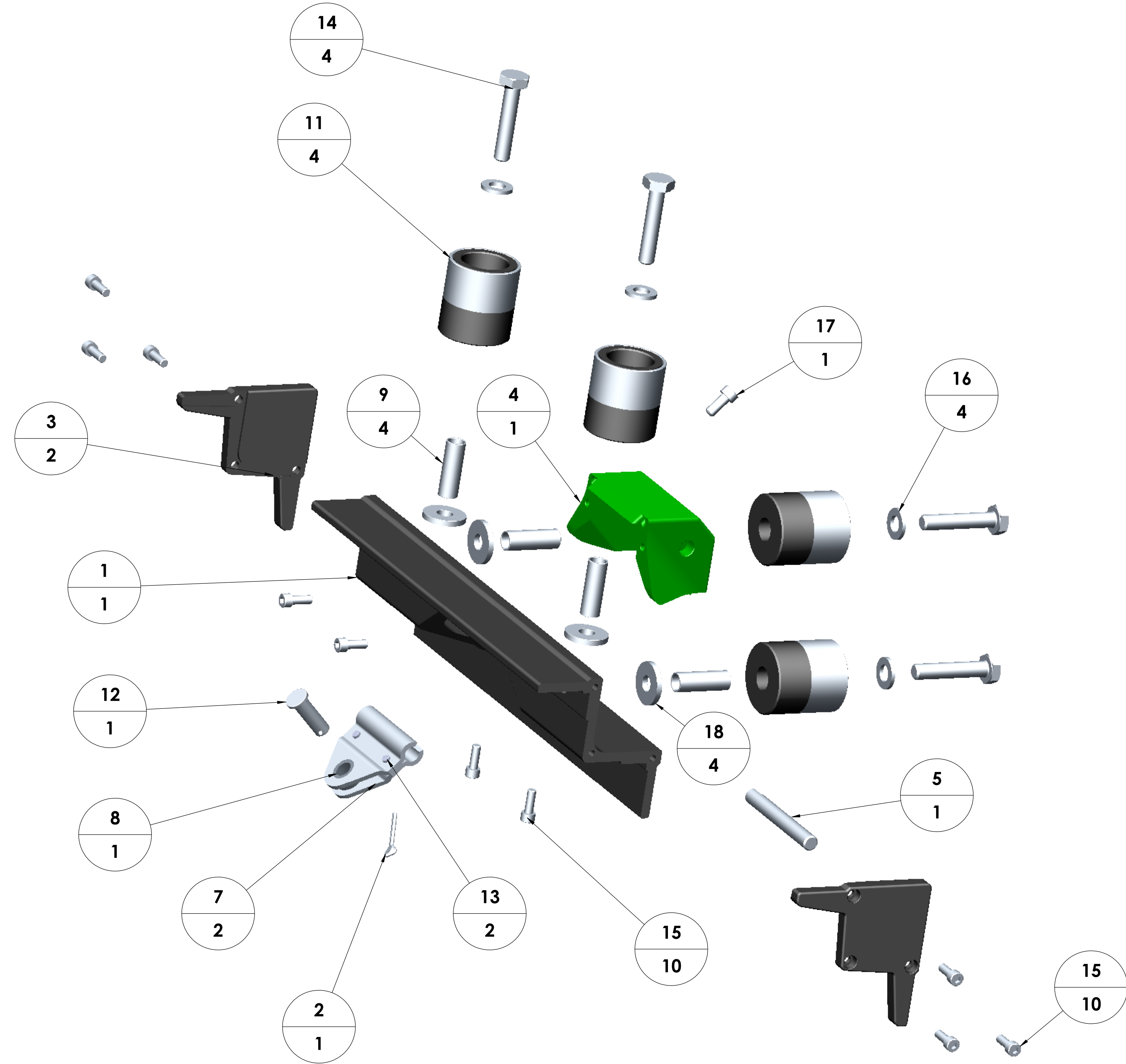


**NOTE: CR-8, SHW-180 & CR-12 ONLY AVAILABLE AS CR-8 ASMY.  
CR-4 & CR-4A ONLY AVAILABLE AS CR-4 ASMY.**



ITEM NO.	PART NUMBER	DESCRIPTION	QTY.
1	CR-14	BODY	1
2	SHW-093	5/64x3/4 COTTER PIN	1
3	CR-13	END PLATES	2
4	CR-15	ADAPTER	1
4	SHW-170	CUSTOM FLAT WASHER	4
5	CR-2	HINGE PIN	1
7	CR-8	HINGE ASMY	2
8	CR-12	HINGE BUSHING	1
9	CR-5	ROLLER BUSHING	4
10	CR-4	WHEEL ASMY	4
12	SHW-091	1/4 DIAx3/4 LG CLEVIS PIN	1
13	SHW-180	SOLID RIVET	2
14	SHW-172	1/4-20X1-1/4 HEX BOLT	4
15	SHW-059	6-32x3/8 LG HEX SOCKET CAP SCREW	10
16	SHW-092	1/4 FLAT WASHER	4
17	SHW-095	8-32x3/8 LG HEX SOCKET CAP SCREW	1
18	SHW-170	CUSTOM FLAT WASHER	



**PROPRIETARY AND CONFIDENTIAL**  
THE INFORMATION CONTAINED IN THIS DRAWING IS THE SOLE PROPERTY OF NorthStar Taping Tools Ltd. ANY REPRODUCTION IN PART OR AS A WHOLE WITHOUT THE WRITTEN PERMISSION OF NorthStar Taping Tools Ltd. IS PROHIBITED.

TITLE:	<b>CORNER ROLLER ELITE™</b>	SIZE:	<b>D</b>	REV:	<b>B</b>
		SCALE: 1:4	WEIGHT:		SHEET 1 OF 1