

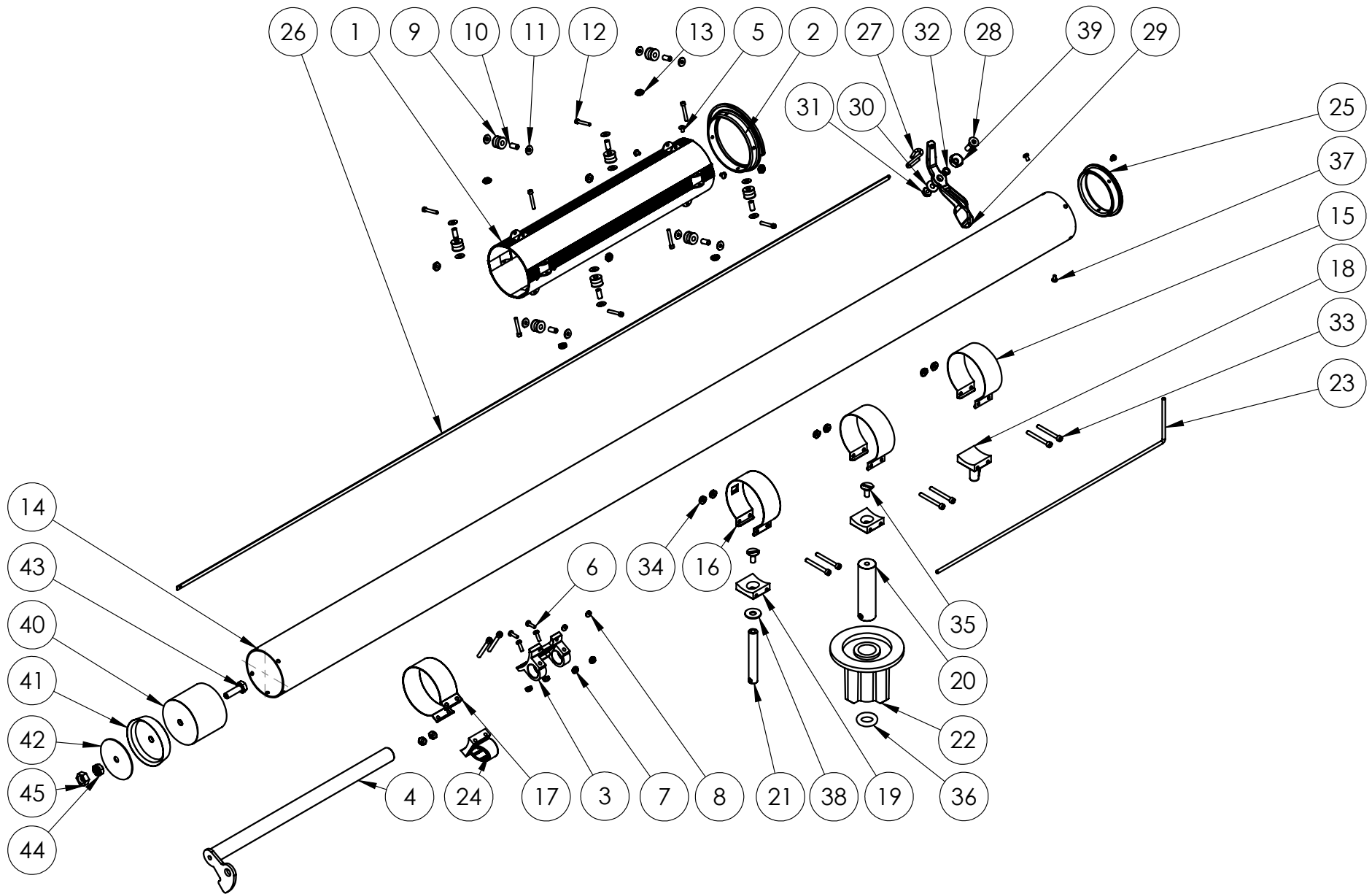
PROPRIETARY AND CONFIDENTIAL
 THE INFORMATION CONTAINED IN THIS DRAWING IS THE SOLE PROPERTY OF NorthStar Tools, 4381 Dawson Street, Burnaby, BC V5C 4B4. ANY REPRODUCTION IN PART OR AS A WHOLE WITHOUT THE WRITTEN PERMISSION OF NorthStar Tools IS PROHIBITED.

UNLESS OTHERWISE SPECIFIED:
 DIMENSIONS ARE IN INCHES
 TOLERANCES:
 FRACTIONAL $\pm 1/64"$
 ANGULAR: MACH $\pm 0.25^\circ$ BEND $\pm 0.5^\circ$
 TWO PLACE DECIMAL $\pm 0.010"$
 THREE PLACE DECIMAL $\pm 0.005"$

DRAWN	NAME	DATE
	D.M.J.	01/09/08
MATERIAL FINISH		
DO NOT SCALE DRAWING		

TITLE:
TAPER HEAD ASSEMBLY

		Toll Free: 1-866-379-0665 Fax: (604) 320-0667 www.NorthStarTool.com
SIZE B	DWG. NO. PS01 Exploded	REV
SCALE: 1:3	WEIGHT:	SHEET 1 OF 1



PROPRIETARY AND CONFIDENTIAL
 THE INFORMATION CONTAINED IN THIS DRAWING IS THE SOLE PROPERTY OF NorthStar Tools, 4381 Dawson Street, Burnaby, BC V5C 4B4. ANY REPRODUCTION IN PART OR AS A WHOLE WITHOUT THE WRITTEN PERMISSION OF NorthStar Tools IS PROHIBITED.

UNLESS OTHERWISE SPECIFIED:
 DIMENSIONS ARE IN INCHES
 TOLERANCES:
 FRACTIONAL $\pm 1/64"$
 ANGULAR: MACH $\pm 0.25^\circ$ BEND $\pm 0.5^\circ$
 TWO PLACE DECIMAL $\pm 0.010"$
 THREE PLACE DECIMAL $\pm 0.005"$

	NAME	DATE
DRAWN	D.M.J.	12-20-07
MATERIAL		
FINISH		
DO NOT SCALE DRAWING		

TITLE:
TAPER TUBE ASSEMBLY

		Toll Free: 1-866-379-0665 Fax: (604) 320-0667 www.NorthStarTool.com	
SIZE	DWG. NO.	REV	
A	PS28-Exploded		
SCALE: 1:6	WEIGHT:	SHEET 1 OF 1	

PS01			
ITEM NO.	PART NUMBER	DESCRIPTION	QTY.
1	PS - 15	LOCKING ROLLER ASSEMBLY	1
2	PS - 14	PUSH ROD ASSEMBLY	1
3	AT - 144	TAPE GUIDE SPACER BAR	1
4	SHW-129	2-56 x 1/8 LG SLOT BIND HEAD SCREW	2
5	SHW-134	4-40 x 1/4 LG SLOT FLAT HEAD (100 DEG) SCREW	6
6	SHW-118	6-32 x 3/8 LG SLOT PAN HEAD	7
7	AT-145R	Weldment- Tape Guide	1
8	AT - 154	TAPER HEAD	1
9	AT-PS-09	Baffle Plate Assy.	1
10	AT - 132-A	SIDE PLATE R-H	1
11	AT 132	SIDE PLATE L-H	1
12	AT - 22	BEARING BRACKET	2
13	AT - 131	SIDE PLATE SHIM	2
14	AT - 130	SCREW BLOCK	2
15	SHW-016	6-32x1/4 LG HEX SOCKET CAP SCREW	8
16	SHW-045	6-32x3/16 LG SLOT FILLISTER HEAD SCREW	3
17	SHW-052	4-40x1/8 LG SLOT PAN HEAD SCREW	6
18	SHW-127	#4 REGULAR LOCK WASHER	6
19	SHW-116	4-40x5/16 LG SLOT PAN HEAD SCREW	2
20	SHW-047	4-40x3/16 LG SLOT PAN HEAD SCREW	2
21	SHW-120	4-40x1/8 LG SLOT FLAT HEAD (100 DEG) SCREW	2
22	SHW-122	6-32x1/4 LG SLOT FLAT HEAD (100 DEG) SCREW	1
23	SHW-114	#6 REGULAR SPRING LOCK WASHER	4
24	SHW-131	6-32x3/16 LG PAN HEAD SCREW	3
25	AT - 31	CAM	1
26	AT - 96	GOOSER RELEASE CAM	1
27	AT - 168	SPECIAL TIE ROD	1
28	AT - 51	COVER CAP	1
29	AT - 113	O RING HOUSING	1
30	AT - 24	BRACKET BASE	1
31	SHW-133	O RING	1
32	AT - 74	DISENGAGING ROD BEARING	1
33	AT - 75	DISENGAGING ROD	1
34	AT - 73	DISENGAGING CAM	1
35	AT - 39	COLLAR BUSHING	1
36	SHW-038	6-32 THIN NYLOCK	3
37	SHW-139	#6 FLAT WASHER	1
38	SHW-076	4-40 x 5/16 LG SLOT FILLISTER HEAD SCREW	2
39	SHW-158	4-40 x 1/4 Bind Head Slot Screw	7
40	PS04	TAPE RUNNER SHORT HUB ASSEMBLY	1
41	AT - 58	CREASER WHEEL AXLE	1
42	AT - 135	SPACER	1
43	AT - 59	CREASER WHEEL	1
44	SHW-130	8-32 x 1-1/2 LG SLOT ROUND HEAD SCREW	1
45	SHW-162	NUT 8 - 32 REG NYLOCK	2
46	SHW-074	#10 BRASS FLAT WASHER	2
47	AT - 62	CUTOFF SPRING BRACKET	1
48	AT - 01	ANCHOR	1
49	SHW-043	10-24 WING NUT	1
50	SHW-081	5/8 KEY RING	1
51	AT - 172	CUT-OFF SPRING BRACKET SPRING	1

PS01			
52	SHW-164	#10 NYLON WASHER	2
53	PS05	TAPE RUNNER SHORT HUB ASSEMBLY	1
54	PS18	FILLER VALVE ASSEMBLY	1
55	AT - 26	BULKHEAD	1
56	AT - 25	BRACKET BLOCK	1
57	AT - 03	ANVIL	1
58	AT - 138	SPRING ANCHOR	1
59	AT - 164	ROLLER ADJUSTMENT LEVER	1
60	AT - 137	SPRING ANCHOR WASHER DELRIN	1
61	AT - 102	INSERT	1
62	SHW-103	6-32 x 5/16 LG SLOT PAN HEAD	2
63	SHW-110	6-32 X 1/4 BIND HEAD SCREW	1
64	SHW-141	4 - 40 x 1/8 LG HEX SET SCREW	1
65	AT - 68	CUTTER BLOCK	1
66	AT-63	CUTTER BLADE	1
67	AT - 65	CUTTER BLOCK CLAMP	1
68	SHW-161	5/64 x 1/4 LG ROLL PIN	2
69	AT - 66	CUTTER BLOCK TUBE	1
70	SHW-072	4-40 NYLOCK	1
71	AT - 30	CABLE DRUM	1
72	AT - 84	DRUM WASHER	1
73	SHW-128	8-32 x 1/4 LG HEX SOCKET SET SCREW HALF DOG POINT	3
74	AT - 101	HEAD BUSHING	1
75	AT - 100	HEAD BUSHING LARGE	1
76	SHW-053	4L6-D NYLINER	2
77	SHW-132	2-56 X 3/4 FILLISTER SCREW	1
78	AT - 83	DRIVER SHAFT	1
79	AT - 167	NYLATRON BEARING	1
80	AT - 94	GOOSER GUIDE	1
81	AT - 93	GOOSER CUTTER CHAIN STOP	2
82	SHW-137	6-32 x 5/8 LG SOCKET CAP SCREW	1
83	SHW-155	6-32 x 5/8 FLAT HEAD	1
84	AT-64	CUTTER CHAIN	1
85	AT-56	CREASER CHAIN	1
86	AT-105	MAIN CHAIN	1
87	AT - 34	CHAIN ROLLER SUPPORT BRACKET MAIN	1
88	AT - 36	CHAIN ROLLER	2
89	AT - 33	CHAIN ROLLER BUSHING	2
90	SHW-119	Screw - Socket Head #4-40 x 3/8	4
91	SHW-117	8-32x5/8 LG SLOT TRUSS HEAD SCREW	2
92	AT - 35	CHAIN ROLLER SUPPORT	1
93	AT - 32	CHAIN KEEPER WASHER	1
94	AT - 38	CHAIN TENSIONER	1
95	SHW-160	8 - 32 THIN NYLOCK	1
96	AT-107R	Spocket Assy.	1
97	AT - 76	DRIVE DOG HOLDER	1
98	AT - 79	DRIVE DOG	1
99	AT - 78	DRIVE DOG SPRING	1
100	AT - 77	DRIVE DOG ROLLER	1
101	SHW-126	COTTER PIN 1/16 x 1/2	3
102	SHW-124	1/16 x 3/8 LG SPRING PIN	2
103	SHW-123	3/32 x 3/8 LG SPRING PIN	1
104	AT - 70	CUTTER CHAIN TUBE LINK	1
105	AT - 82	DRIVE WHEEL	1
106	AT - 80	DRIVE HUB	2
107	AT - 158	TAPER WHEEL	2

PS01			
108	SHW-159	4-40 x 3/16 Bind Head Screw	14
109	AT - 81	DRIVE SHAFT MAIN	1
110	AT - 134	SMALL SPROCKET	1
111	AT - 91	GOSSER BODY	1
112	AT - 98	GOSSER BUSHING	1
113	AT - 104	MAGNET HOLDER	1
114	AT - 109	NEEDLE HOLDER	1
115	AT - 108	NEEDLE HOLDER LOCK	1
116	AT95	Gooser Needle	1
117	AT - 110	NEEDLE SPRING	2
118	SHW-154	6-32 x 1/4 LG FILLISTER HEAD SCREW	1
119	SHW-098	6-32 x 1/8 LG SET SCREW	1
120	SHW-135	4-40 x 3/16 LG TRUSS HEAD	2
121	AT - 85	FILLER DOOR ARM	1
122	AT - 46	CONTROL VALVE	1
123	SHW-156	2-56 x 3/16 LG SLOT FILLISTER HEAD SCREW	4
124	AT - 163	WIPE RETAINER	1
125	AT45	Control Wiper Seal	1
126	SHW-125	4-40 THIN NUT	2
127	AT - 57	CREASER CRANK	1
128	AT - 173	CREASER RETURN SPRING	1
129	AT-53L	Creaser Arm- LH	1
130	AT-53R	Creaser Arm- RH	1
131	AT - 103	MAGNET	1
132	AT - 29	CABLE	1
133	SHW-157	3-48 THIN NUT	1

PS28			
ITEM NO.	PART NUMBER	DESCRIPTION	QTY.
1	AT - 153	CONTROL TUBE	1
2	AT - 166	CONTROL TUBE PULL RING	1
3	AT - 43	CONTROL TUBE BRACKET	1
4	AT-PS-31	CONTROL EXTENSION TUBE ASSEMBLY	1
5	SHW-135	4-40x3/16 LG SLOT TRUSS HEAD SCREW	4
6	SHW-153	4-40x3/8 LG SLOT PAN HEAD SCREW	4
7	SHW-072	4-40 NYLOCK	4
8	SHW-136	8-32x1/4 LG HEX SOCKET SET SCREW HALF DOG POINT	2
9	AT - 128	ROLLER	8
10	AT - 126	ROLLER BUSHING	8
11	AT - 127	ROLLER WASHER	16
12	SHW-149	5-40x3/4 LG HEX SOCKET CAP SCREW	8
13	SHW-148	5-40 LOCK NUT	8
14	AT-152	TAPER TUBE	1
15	AT - 20	Band	2
16	AT-20B	BAND B	1
17	AT-20C	BAND C	1
18	AT - 11	BAND ADAPTER A	1
19	AT - 175	BAND ADAPTER BASE	2
20	AT - 14	BAND ADAPTER MAIN	1
21	AT - 12	BAND ADAPTER C	1
22	AT - 151	TAPE SPOOL	1
23	AT - 146	TAPE ROLL KEEPER	1
24	AT-13	Band Adapter- Guide Post	1
25	AT - 162	TUBE PROTECTOR	1
26	AT - 55	CREASER CONNECTOR STRAP	1
27	AT - 129	S HOOK CREASER STRAP	1
28	AT - 161	TRIGGER BAND POST	1
29	AT - 159	TRIGGER LEVER	1
30	SHW-061	10L Brass Flat Washer	1
31	SHW-146	10-24 Nylock Nut	1
32	SHW-011	3L3-F NYLINER	1
33	SHW-144	6-32x1.25 Sockethead CAP SCREW	8
34	SHW-038	6-32 Thin Nylock	8
35	SHW-143	1/4-20 x 1/2 Flathead Screw	2
36	SHW-040	.50 IDx.90 OD O-RING	1
37	SHW-047	4-40x3/16 LG SLOT PAN HEAD SCREW	3
38	SHW-086	11/16 ODx.26 IDx.05 THK FLAT WASHER	1
39	AT-136	Special Nut	1
40	AT - 120	PLUNGER BODY	1
41	AT - 120 A	PLUNGER SEAL	1
42	AT - 120 B	PLUNGER WASHER	1
43	AT - 121	1/4-20x5/8" HEX HEAD SCREW	1
44	SHW-138	1/4-20 SS Castle Nut- Hex	1
45	AT - 61	CUSTOM NUT PLUNGER	1